

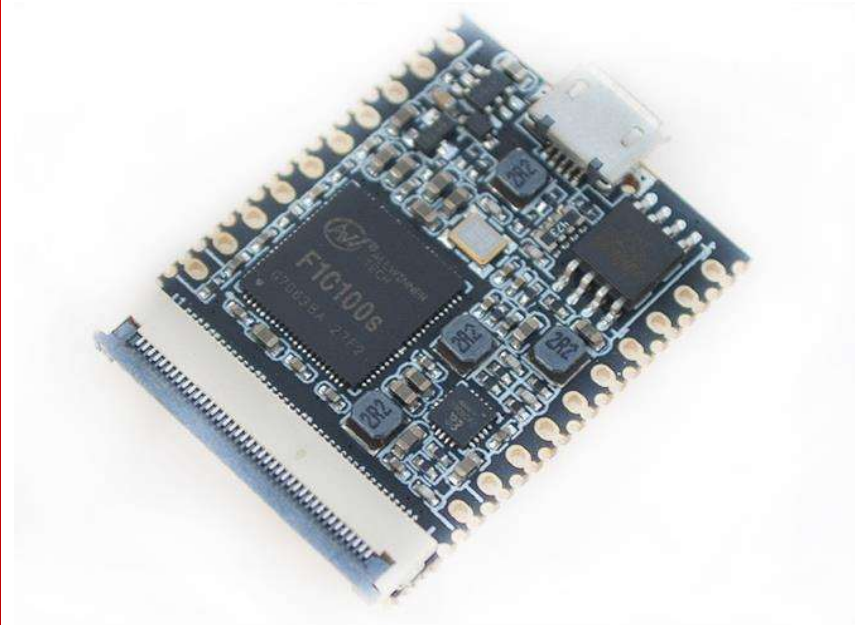
Lichee Nano

Specifications

v1.0

Development board features:

- CPU : Allwinner F1C100s
ARM 9 architecture
Up to 408MHz
- Memory: Integrated 32MB DDR
- Storage: Onboard TF card /
8M/16M nor flash, 128M
nand flash Optional
- Interface: SDIO, UART, SPI, I2C,
OTG USB, PWM, CSI, TV
out etc.
- Display: Universal 40P RGB LCD
FPC Block, Support 272x480,
480x800,1024x600 resolution



Version 1.0

Copyright © 2018

www.sipeed.com

Feature Overview	
CPU	Allwinner F1C100s, ARM 926EJS, Upto 408MHz
Memory & storage	Integrate 32mb gdr Reserved SOP8 SPI Flash pad (customizable patch 8~32MB SPI Nor Flash); Onboard TF slot, can be boot from TF.
display	Universal 40P RGB LCD FPC Socket Can be directly inserted into the common 40P 4.3/5/7 inch screen (onboard backlight driver), through the adapter board can be inserted 50P 7/9 inch screen Support common 272x480, 480x800, 1024x600 and other resolutions On-board resistive touch screen chip, combined with backplane adaptable capacitive touch screen
Communication Interface	SDIO, can be used with SDIO WiFi+BT module SPI x2 TWI x3 UART x3 OTG USB x1 TV out
Other interface	PWM x2 LRADC x1 Headphone output x2 + Mic x1
Electrical characteristics	Micro USB 5V power supply; 2.54mm pin 3.7V~5V power supply; 1.27mm stamp hole power supply 408MHz linux no-load operating current 54mA, with screen operating current ~250mA Storage temperature -40~125°C, operating temperature -20~70°C

Software and development environment

Support for 3.10 BSP linux,

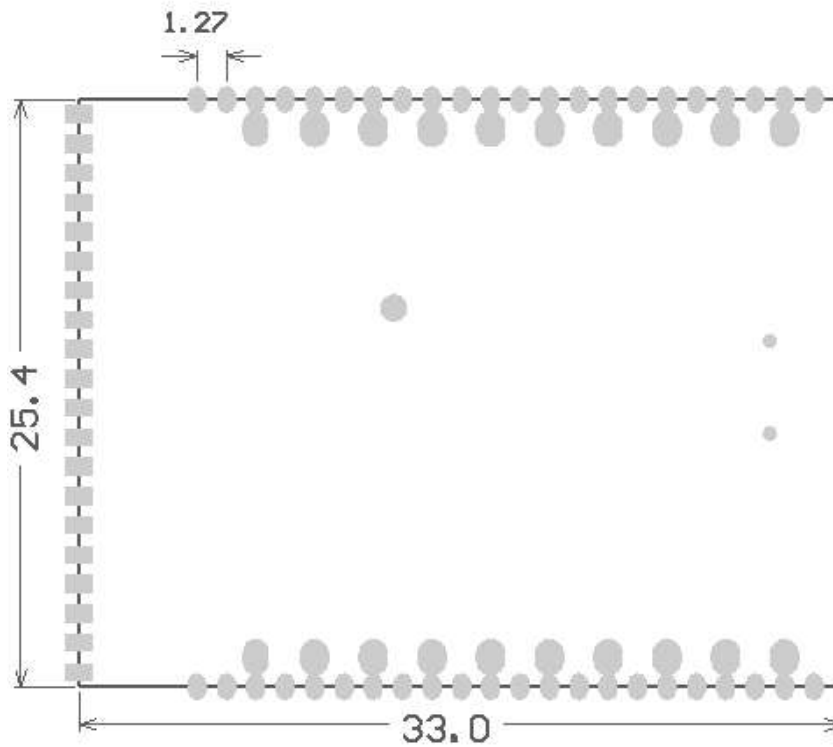
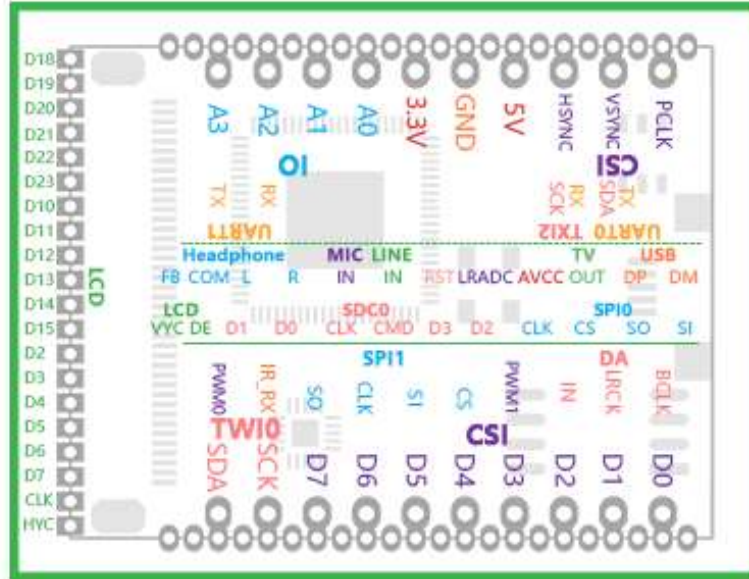
Support 4.19 mainline linux,

Support xboot bare metal development environment

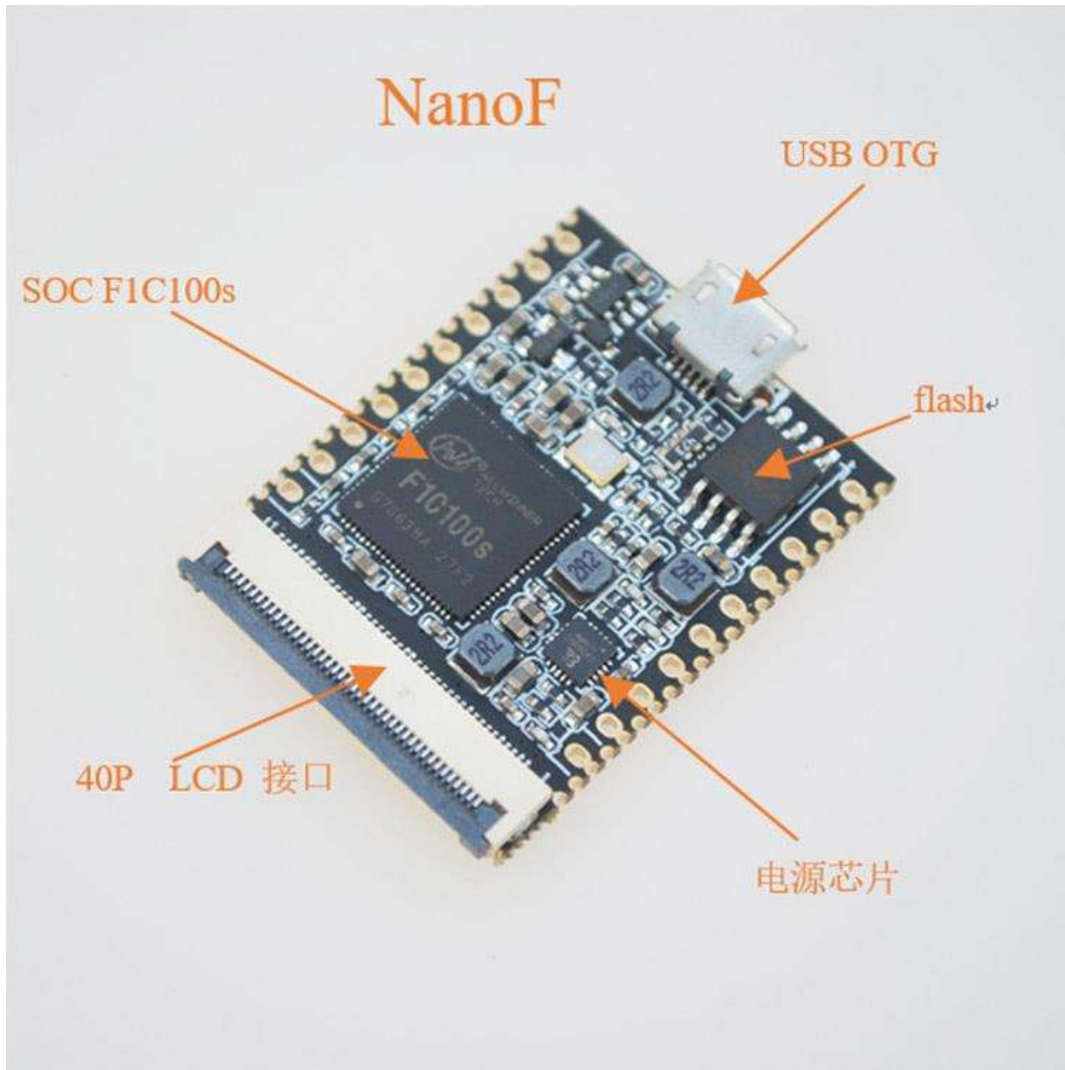
Lichee Nano core board pin diagram



Lichee Pi Nano PinMap



Development board module and interface



Communicate communities and resources

Github	https://github.com/Lichee-Pi
BBS	http://bbs.lichee.pro/t/lichee
Wiki	nano.lichee.pro
Email	support@sipeed.com

Size and weight	
Core board size	25.4x33.0mm
Core board weight	4.2±0.2g

Precautions	
start up	Nano needs card boot (or solder SPI flash), only plug in USB without any phenomenon
System debug serial port	UART0, specific position reference pin diagram
USB interface	OTG usb, power and communication
Operating temperature	-20~70°C
Running current	408MHz linux no-load operating current 54mA, with screen operating current ~250mA

Target application scenario:

- IoT applications using more complex communication interfaces and protocols
- The application of human-computer interaction interface that needs more beautiful and complex logic
- Application scenarios that require more operations (as opposed to common MCUs)
- Need to use open source software under Linux for rapid development scenarios
- High-end geek players balance in size, performance and ease of use.
- Entry level player, software engineer, hardware diy using familiar language



Disclaimer and copyright notice

The information in this document, including the URL address for reference, is subject to change without notice.

The documentation is provided by Sipeed™ without warranty of any kind, including any warranties of merchantability, and any proposal, specification or sample referred to elsewhere. This document is not intended to be a liability, including the use of information in this document to infringe any patent rights.

copyrights by 2018 sipeed limited. all rights reserved.